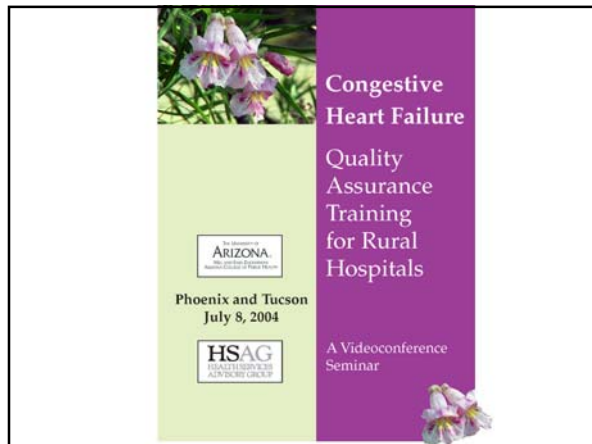


## Congestive Heart Failure Quality Assurance Training for Rural Hospitals



### Learning Objectives

- Describe the pathophysiology of CHF.
- Explain the difference between systolic and diastolic heart failure.
- Describe how the diagnosis of CHF is determined.
- Explain the importance of assessing left ventricular function in suspected CHF patients.
- Describe the various methods of assessing left ventricular ejection fraction.

### Learning Objectives

- Describe the role of appropriate medications for CHF patients.
- Identify the components of appropriate discharge planning for CHF patients.
- Demonstrate the five “A”s of smoking cessation counseling.
- List three resources in Arizona for smoking cessation.
- Describe the Chronic Care Model.

### Housekeeping

- Restrooms
- Pagers/Cell phones on “stun”
- Videotaping for HSAG Web site
  - Microphone etiquette
  - Camera etiquette
  - Question etiquette
- Lunch at high noon
- Sharing forms
- Pretest

### Introductions

- Alison Hughes
- Dr. Forrest Calico
- Dr. Kris Vijay
- Dr. Rajendran Sabapathy
- Dr. Carter Marshall
- Jean Donie
- Suzanne Powell
- Zenén Salazar
- HSAG Clinical Quality Specialists